

# **Navionics Boating App + Agapi Routes**

## **Your Guide On The Water**



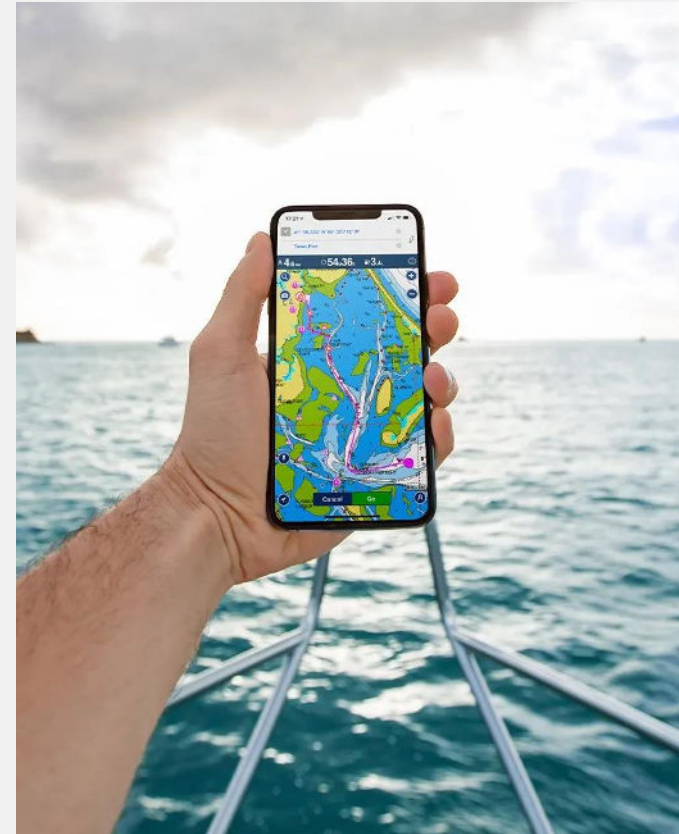
## Navionics @Agapi Boat Club

With more than 3,000 bookings yearly and all the statistics gathered from those boat trips, we are convinced that we can support you in improving your navigation skills and in feeling safer at sea. To this end we have created Agapi Routes. A fun and safe way to explore new waters and visit our recommended gems starting from any of our harbours.

All our boats are equipped with large plotters to help you navigate, avoid collisions and find your way.

We strongly advice all our members to use a secondary navigation tool, such as your smartphone, to assure safe navigation. Our boats are also equipped with smartphone holders next the plotter.

Agapi has chosen to work closely with Navionics and is now integrating their app into our Agapi ecosystem.



## Navionics @Agapi Boat Club

When you do your onboarding with your Agapi mentor, you will revise how this work and this is both great fun and truly a way to feel safer at sea.

- The same detailed marine and lake charts and advanced features as on the best GPS plotters.
- It is perfect for planning routes in advance and get time and fuel estimates.
- It makes it easier to follow the route on a secondary device at sea while using plotter for nearby attention.
- Agapi share destinations as Markers for you to explore new waters in a fun and safe way.



# Navionics @Agapi Boat Club



## Step 1: Find the App

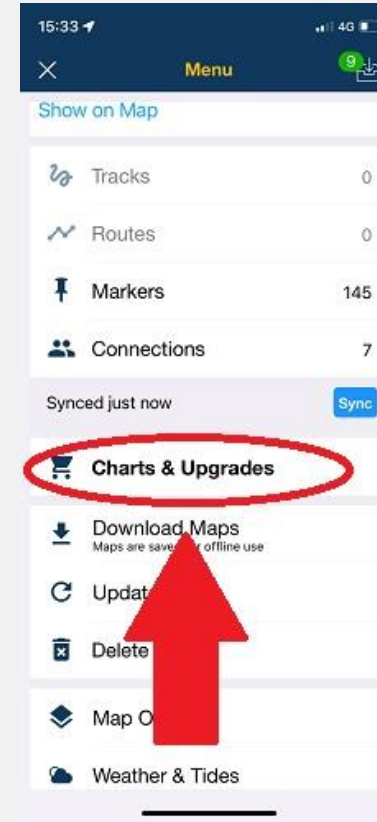
Apple: <https://apple.co/35dix39>

Android: <https://bit.ly/2W2YpMZ>

## Step 2: Subscribe to map

Go to Menu → Charts & Upgrades → Choose map

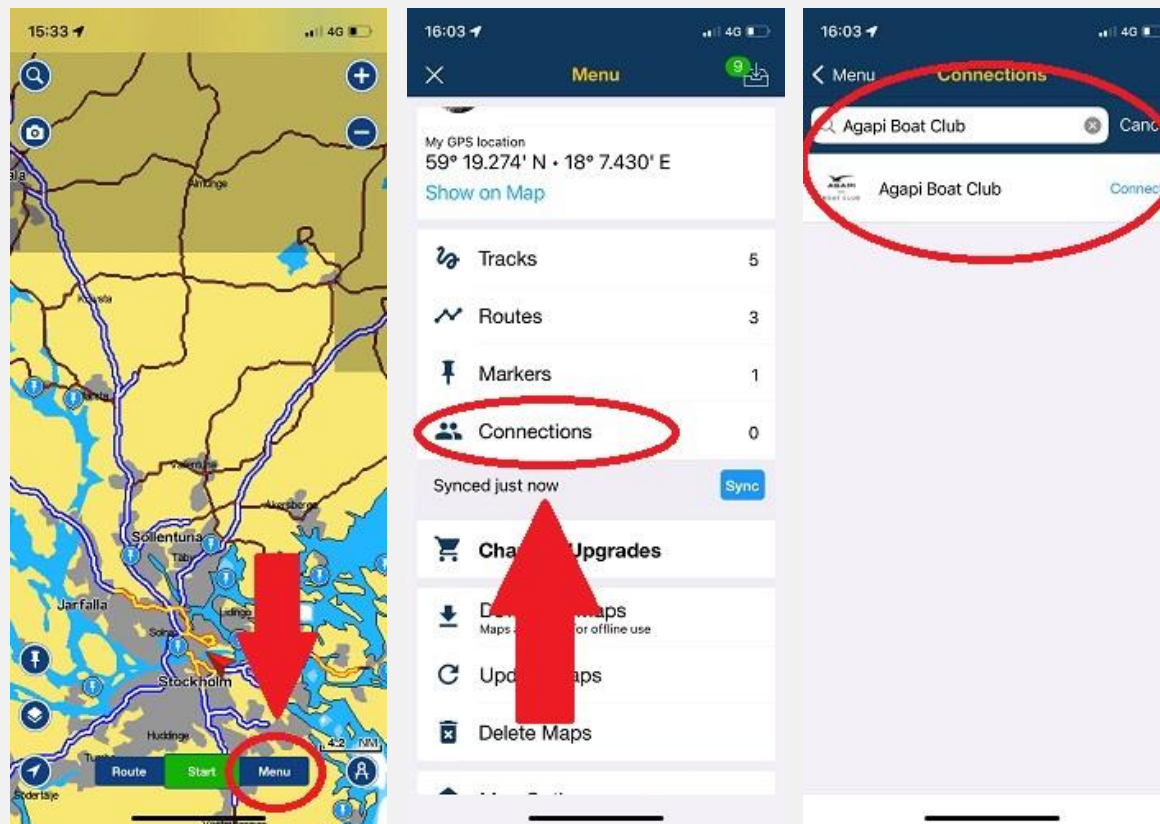
Choose map that covers your desired area.



## Navionics @Agapi Boat Club

### Step 3: Connect to Agapi Boat Club

Go to Menu → Connections → Search → Agapi Boat Club.



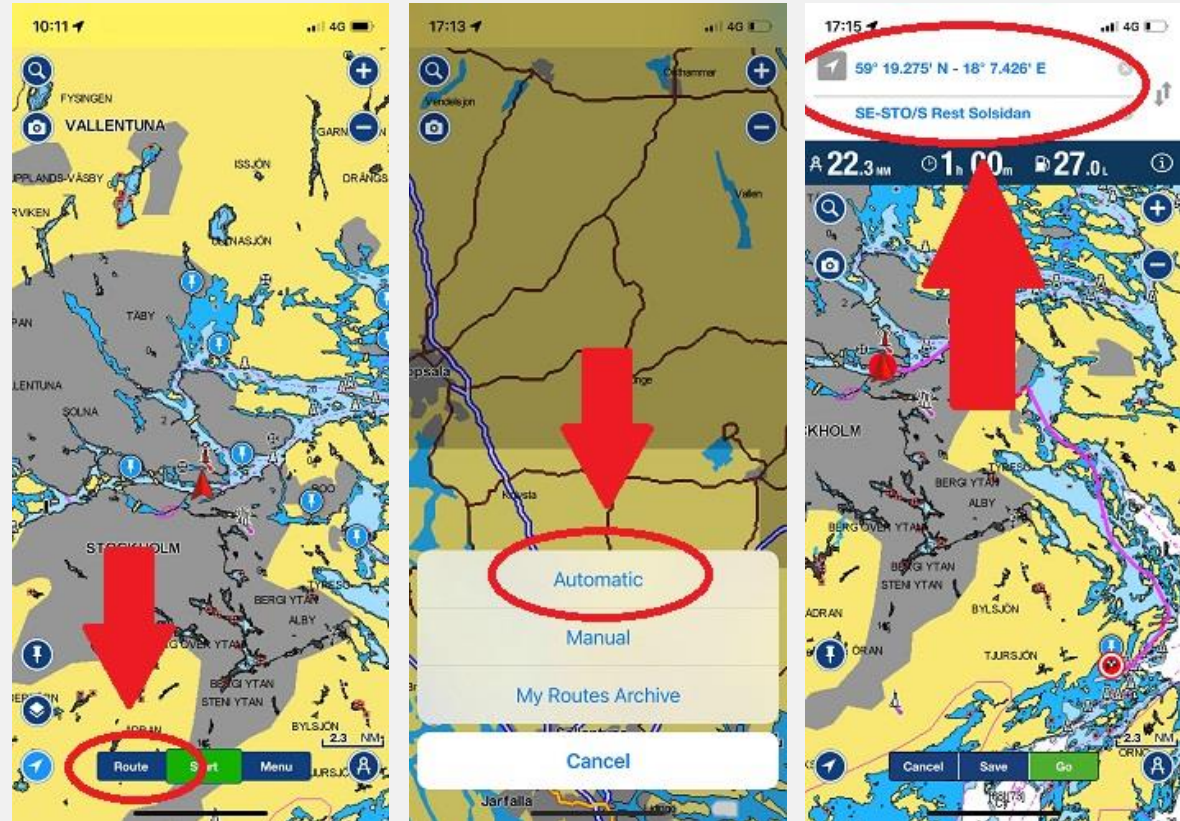


## Navionics @Agapi Boat Club

### How to use Agapi Routes /Markers

Go to Route ➡ Automatic ➡ The arrow means using current position.

When you choose to click on the line next page pop ups and you can choose what Marker you wish to go to or also start from.



## Navionics @Agapi Boat Club

### How to use Agapi Routes /Markers

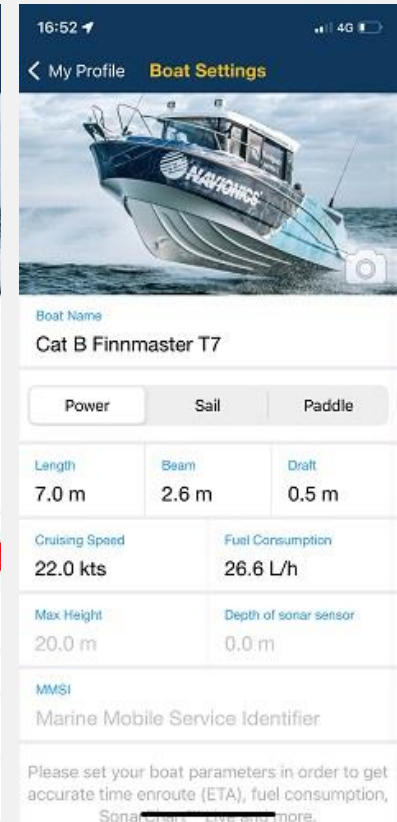
You get suggested route. And if you have set boat parameters you also get an estimate time and fuel consumption



## Navionics @Agapi Boat Club

### How to set boat parameters to get time and fuel estimate in route planning

Go to Menu → Boat – Configure Settings → The example of data is for a typical Category B boat and at 22 knots cruising speed that has the lowest fuel consumption per n.m.





## Navionics @Agapi Boat Club

### How to set orientation of Map

You can choose three different options of how map is displayed during route.

**North Up:** The map will be fixed always showing north up, and the boat is moving in direction.

**Head Up:** The boat will be fixed always facing top of the screen and the map is moving in direction.

**Course Up:** The map will be fixed always pointing towards Waypoint/Marker.

