

## Member's plotter guide

### **AGAPI BOAT CLUB PLOTTER GUIDE:**

Agapi Boat Club gives you access to many different boats with different settings, however all of them are configured in the same way. Our boats use customised Start-up screen and Home screens, giving you access to all the information required for your Check-in and Check-out whilst allowing you for quick navigation through all the modules the plotter has.

Whenever you step on an Agapi Boat you will find the information in the same position of the screen.

These standard configurations include:

- Agapi Boat Club splash screen
- Agapi Boat Club "Home screen configuration"
- Agapi Boat Club "Navigation chart configuration"
- Agapi Boat Club "Engine display configuration"
- Agapi Boat Club "Combo display configuration"
- Additional information

## Member's plotter guide

### AGAPI BOAT CLUB SPLASH SCREEN:

Agapi Boat Club will welcome you on board with the splash screen and take you directly to the home screen.

As shown in the picture below



### AGAPI BOAT CLUB HOME SCREEN

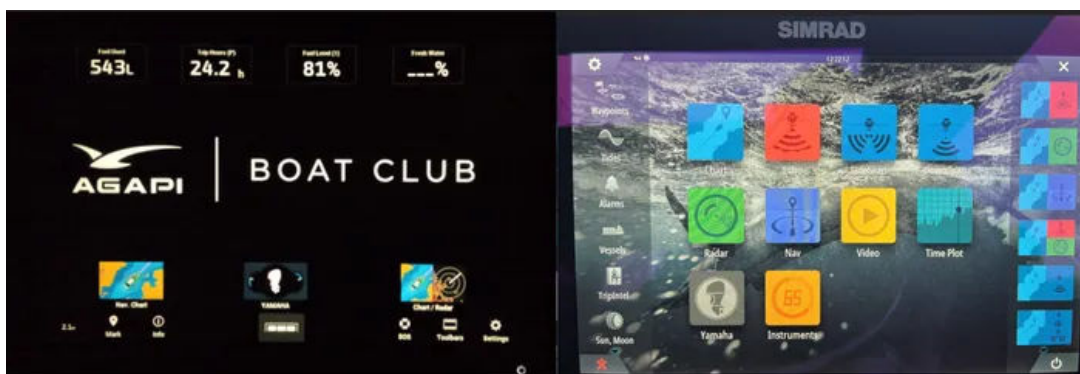
On boats equipped with a GARMIN display, you will find a home screen with all the information required for your Check-in and Check-out:

- Fuel used
- Engine hours
- Fuel level %

You can always access this home screen by pressing the Home button on the display

Also, from here you can navigate further out to all our different display options:

- Navigation Chart
- Engine display
- Combo display
- Others



*Agapi standard home screen GARMIN and SIMRAD*

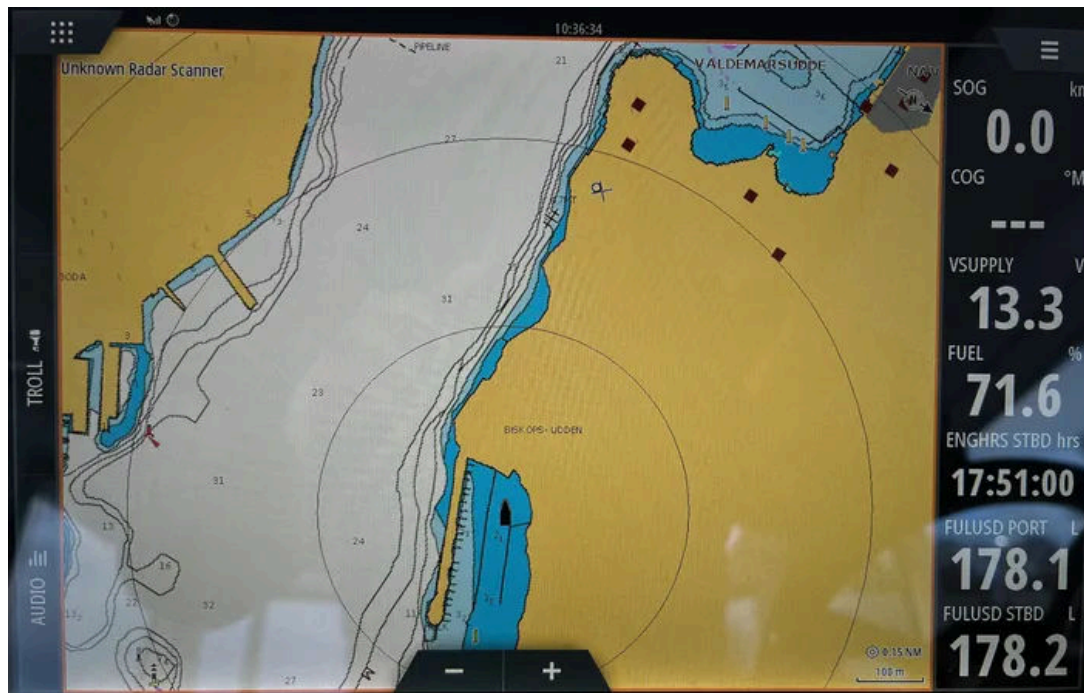
# Member's plotter guide

## AGAPI BOAT CLUB NAVIGATION CHART

Standard navigation chart for all out boats (not to be changed):

- **Water shading:** Anything below 3m deep will be coloured in blue/dark blue.
- **Heading vector:** all our boats will have a heading vector set at 1 minute of navigation, letting you know the position you will find yourself in 1 minute at the current speed and heading.
- **Range rings:** to further allow you to be aware of the distance.
- **Right hand side bar information:** This set up is standard for all our boats, here you will find information relevant to navigation, such as: SOG (Speed over ground), COG (Course over ground), depth / service battery voltage, fuel level, engine Hours, fuel used. This is not to be changed!

**IMPORTANT:** Agapi Boat Club makes sure you have all the information needed to navigate at any given time and also emphasizes the importance of always having an additional navigation device on board (e.g. Navionics app on your smartphone)

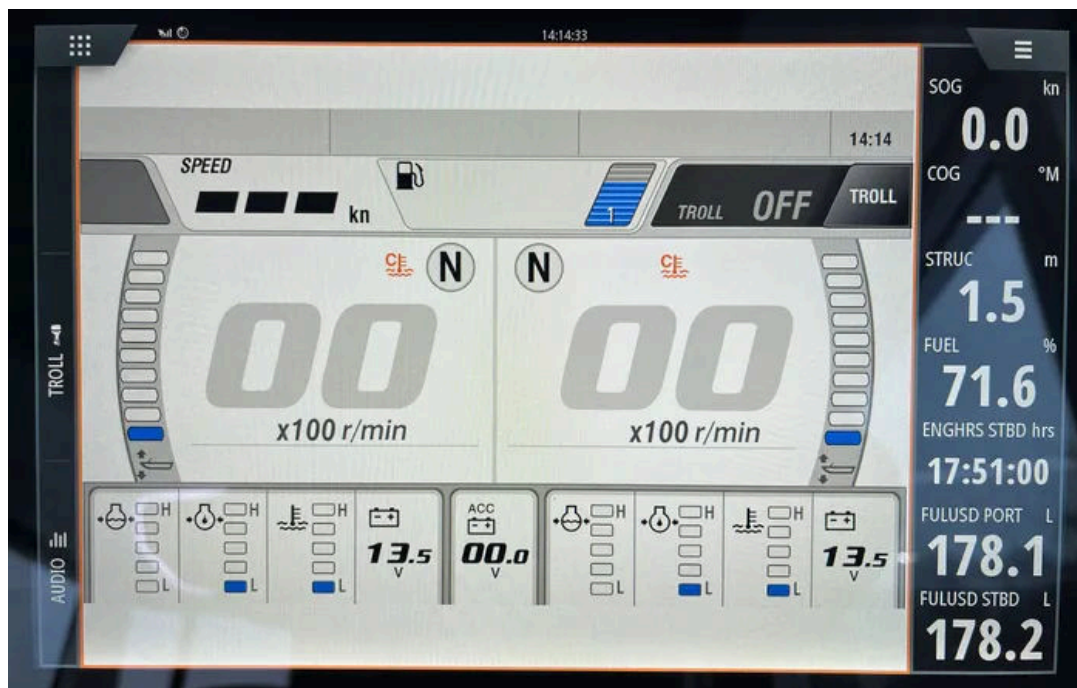


*Agapi standard navigation chart SIMRAD*

## AGAPI BOAT CLUB ENGINE DISPLAY

This is the main Engine information display where you will find:

- Engine trim
- Engine battery voltage
- RPM
- Fuel consumption
- Fuel level
- Rudder



*Agapi engine display YAMAHA*

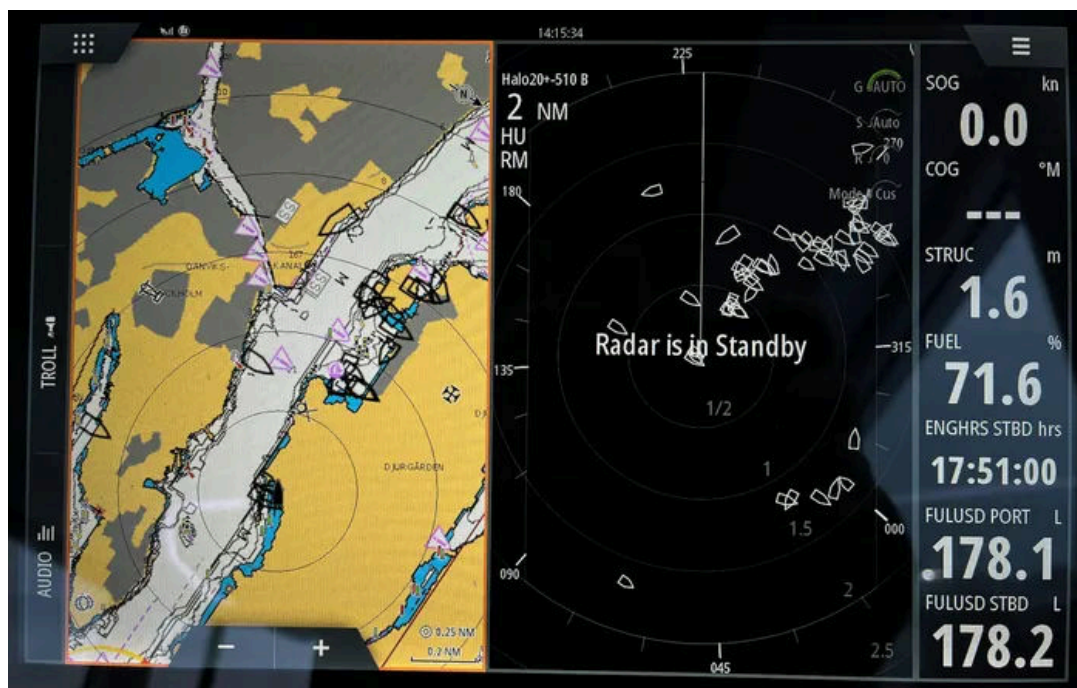
### AGAPI BOAT CLUB COMBO DISPLAY

This allows us to combine 2 displays into one, useful in case your boat is equipped with additional navigational tools such as a Radar or a Sonar.

All members using the boats in the Scandinavian region must know and master the use of these tools, it is a requirement to use the boats in these regions. The combo set-ups include:

- Navigation chart and radar combo
- Navigation chart and sonar combo

Please check our Winter Boating course for more information about the Radar!



*Agapi standard combo display SIMRAD (Navigation + Radar)*